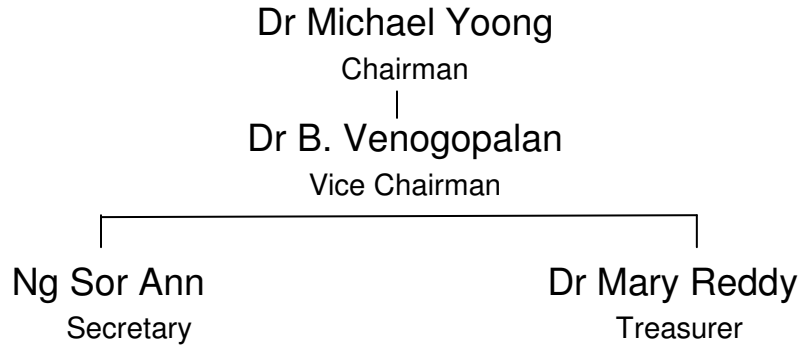


**Pertubuhan Hospis Klang (HOSPICE KLANG)**

**Organisation Chart**

**The Executive Committee**



**Committee Members**

P. Parameswari  
Asso. Prof Pn. Sri Datin Dr Mary Lee  
Grace Liew  
Tony Mak  
V. Balan

**Advisor**

Dr Karam Singh

**The Staff**

Matron Phylis Rani Singam  
Nursing Director

Tan Guat Hong  
Administrator

Srumalar a/p Arokiasamy  
Nurse

**Part-Time Staff**

Sister Philomena  
Nurse

Chew Ket Hong  
Dispenser